



WBA0110A

0.1 – 1.0 LOW NOISE WIDE BAND AMPLIFIER

REV D
October 2013

Key Features



- 50 Ohm Impedance
- 0.10 – 1.0 GHz
- 0.55 dB Noise Figure
- 34.0 dBm Output IP₃
- 23.0 dB Gain
- 19.0 dBm P_{1dB}
- 1.35:1 VSWR
- Single Power Supply
- >64 years MTBF
- Unconditional Stable
- RoHS Compliant

Product Description

WBA0110A integrates WanTcom proprietary low noise amplifier technology, high frequency micro electronic assembly techniques, and high reliability design to realize optimum low noise figure, wideband, high linearity, and unconditional stable performances together. With single +5.0V DC operation, the amplifier has optimal input and output matching in the specified frequency range at 50-Ohm impedance system. The amplifier has standard SMA connectorized WP-5 Gold plated housing.

The amplifier is designed to meet the rugged standard of MIL-STD-202.

CAUTION:



ELECTROSTATIC DISCHARGE SENSITIVE

Applications

- Mobile Infrastructures
- VHF & UHF
- CATV/DBS
- Defense
- Security System
- Measurement
- Fixed Wireless



Specifications

Summary of the electrical specifications at room temperature, 21 °C

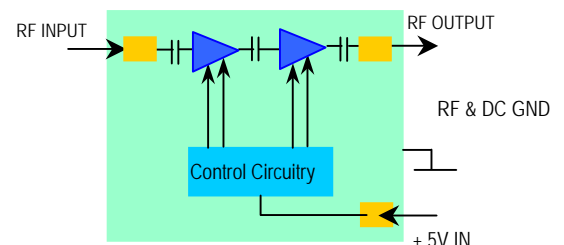
Index	Testing Item	Symbol	Test Constraints	Min	Nom	Max	Unit
1	Gain	S ₂₁	0.1 – 1.0 GHz	21	23	24	dB
2	Gain Variation	ΔG	0.1 – 1.0 GHz		+/- 0.5	+/-1.0	dB
3	Input Return Loss	S ₁₁	0.1 – 1.0 GHz	16	20		dB
4	Output Return Loss	S ₂₂	0.1 – 1.0 GHz	16	18		dB
5	Reverse Isolation	S ₁₂	0.1 – 1.0 GHz	23	27		dB
6	Noise figure	NF	0.1 – 0.2 GHz		0.75	0.85	dB
			0.2 – 0.5 GHz		0.55	0.65	
			0.5 – 1.0 GHz		0.5	0.60	
7	Output Power 1dB Compression Point	P _{1dB}	0.1 – 1.0 GHz	17	19		dBm
8	Output-Third-Order Interception Point	IP ₃	Two-Tone, P _{out} +0 dBm each, 1 MHz separation	30	34		dBm
9	Current Consumption	I _{dd}	V _{dd} = +5 V	55	60	70	mA
10	Power Supply Voltage	V _{dd}		+4.7	+5.0	+5.3	V
11	Thermal Resistance	R _{th,c}	Junction to case			215	°C/W
12	Operating Temperature	T _o		-40		+85	°C
13	Maximum CW RF Input Power	P _{IN, MAX}	DC – 6 GHz			10	dBm

Absolute Maximum Ratings

Parameters	Units	Ratings
DC Power Supply Voltage	V	6V
Drain Current	mA	75
Total Power Dissipation	mW	450
RF Input Power	dBm	10
Channel Temperature	°C	150
Storage Temperature	°C	-55 ~ 125
Operating Temperature	°C	-40 ~ 85
Thermal Resistance	°C/W	220

Operation of this device above any one of these parameters may cause permanent damage.

Functional Block Diagram



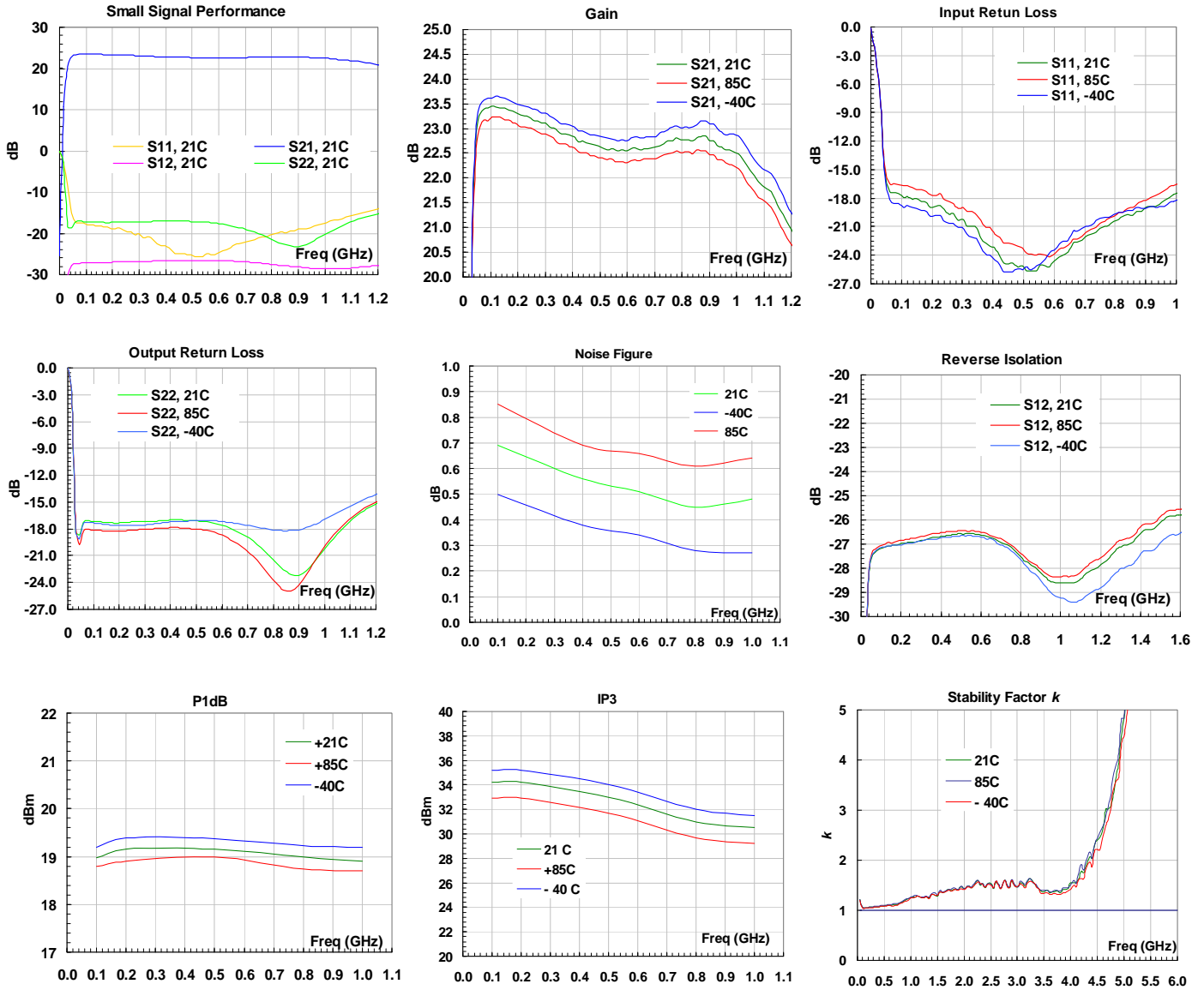
Ordering Information

Model Number	WBA0110A
--------------	----------

Specifications and information are subject to change without notice.



Typical Data

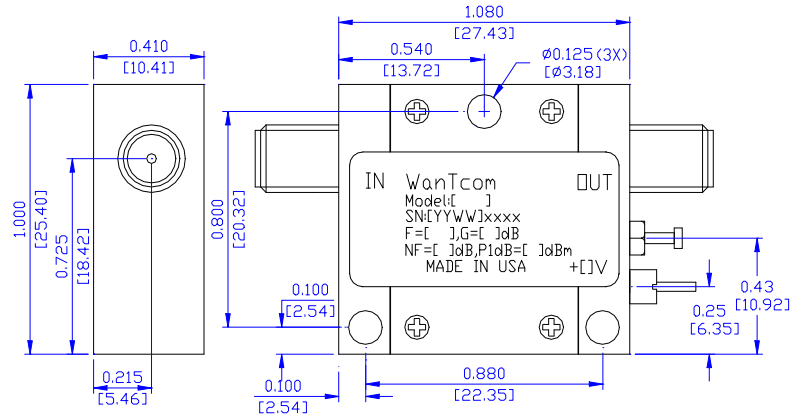


Specifications and information are subject to change without notice.



Outline, WP-5 Housing

UNITS:	INCH [mm]
BODY:	Brass
Finish:	Gold Plating
RF Connector:	SMA F Gold
V _{dd} PWR:	Feed through



Application Notes:

A. SMA Torque Wrench Selection

Always use a torque wrench with 5 ~ 6 inch-lb coupling torque setting for mating the SMA cables to the amplifier. Never use torque more than 8 inch-lb wrench for tightening the mating cable to the connector. Otherwise, the permanent damage will occur to the SMA connectors of the amplifier. 8710-1582 (5 inch-lb) is one of the ideal torque wrench choice from Agilent Technology.

B. DC Power Line Connection

Strip the insulation layer at the end of DC power supply wire. The stripped distance should be in the range of 0.100" to 0.200". The 24 ~ 26 American Wire Gauge wire is suitable. Wound the stripped terminal wire about 1 to 2 turns on the DC feed thru center pin. Solder the wounded wire and the center pin together. Clean the soldering area by Q-tip with alcohol to remove the flux and residue.

Repeat the process to solder the DC return wire on the ground turret.

C. Mounting the Amplifier

Use three pieces of #4-40 with longer than 9/16" screws for mounting the amplifier on a metal-based chase. Flat and spring washers are needed to prevent the screw loosening during the shock and vibration. Always use the appropriate torque setting of the power screwdriver to mount them.
