



WBPA2060A

2.0- 6.0 GHz LOW NOISE MEDIUM POWER AMPLIFIER

REV C
January 2017

Key Features



- 2.0 ~ 6.0 GHz
- 1.4 dB Noise Figure
- 20.0 dBm Output P_{1dB}
- 27.0 dBm Output IP_3
- 25.0 dB Gain
- +/-1.0 dB Gain Flatness
- 1.5:1 VSWR
- Single DC Operation
- >34 Years MTBF
- Unconditional Stable
- RoHS Compliant
- Meet MIL-STD-202g

Product Description

WBPA2060A is integrated with WanTcom proprietary power amplifier technology, high frequency micro electronic assembly techniques, and high reliability design to realize optimum low noise figure, wideband, high linearity, and unconditional stable performances together. With single +9.0V DC operation, the amplifier has optimal input and output matching in the specified frequency range at 50-Ohm impedance system. The amplifier has standard SMA connectorized WP-11 Gold plated housing.

CAUTION:



ELECTROSTATIC DISCHARGE
SENSITIVE

Applications

- Mobile Infrastructures
- Instrumentation
- Defense
- Measurement
- Fixed Wireless



Specifications

Summary of the electrical specifications WBPA2060A at room temperature

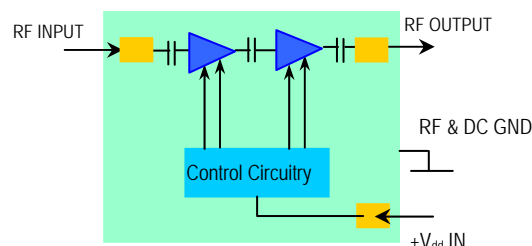
Index	Testing Item	Symbol	Test Constraints	Min	Nom	Max	Unit
1	Gain	S_{21}	2.0 – 6.0 GHz	23	25	27	dB
2	Gain Variation	ΔG	2.0 – 6.0 GHz		+/- 0.8	+/-1.25	dB
3	Input VSWR	SWR_1	2.0 – 6.0 GHz		1.6:1	2:1	Ratio
4	Output VSWR	SWR_2	2.0 – 6.0 GHz		1.6:1	2:1	Ratio
	Noise Figure	NF	2.0 – 6.0 GHz		1.4	1.6	dB
5	Reverse Isolation	S_{12}	2.0 – 6.0 GHz	35	40		dB
6	Output Power 1dB Compression Point	P_{1dB}	2.0 – 6.0 GHz	17	20		dBm
7	Output Power IP_3	IP_3	2.0 – 6.0 GHz	26	28		dBm
8	DC Current Consumption	I_{dd}	$V_{dd} = +9V$		90		mA
9	DC Power Supply Voltage	V_{dd}		8.7	+9	+9.3	V
10	Thermal Resistance of 2 nd Stage	$R_{th,c}$	Junction to case			100	°C/W
11	Operating Temperature	T_o		-40		+85	°C
12	Maximum Input CW RF Power	$P_{IN, MAX}$	DC – 9 GHz			10	dBm

Absolute Maximum Ratings

Parameters	Units	Ratings
DC Power Supply Voltage	V	11
Drain Current	mA	120
Total Power Dissipation	W	1
RF Input Power	dBm	10
Channel Temperature	°C	150
Storage Temperature	°C	-55 ~ 125
Operating Temperature	°C	-40 ~ 85
Thermal Resistance	°C/W	100

Operation of this device above any one of these parameters may cause permanent damage.

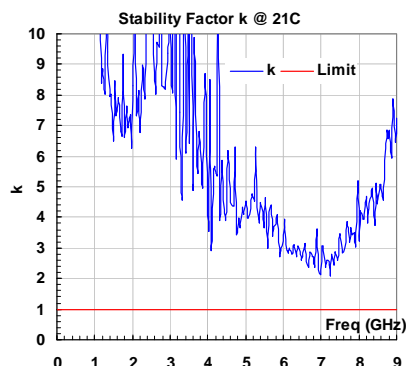
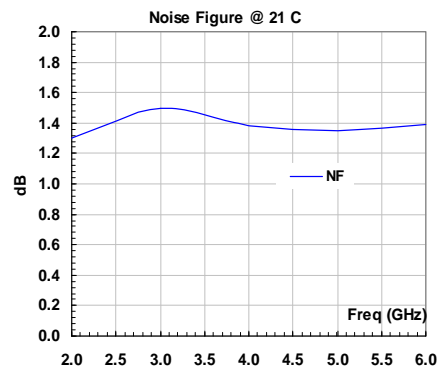
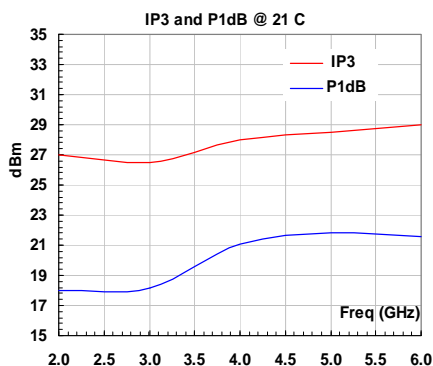
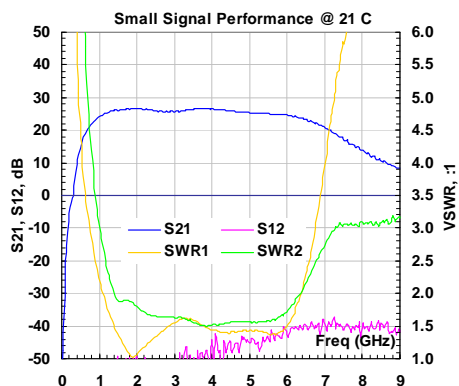
Functional Block Diagram



Ordering Information

Model Number	WBPA2060A
--------------	-----------

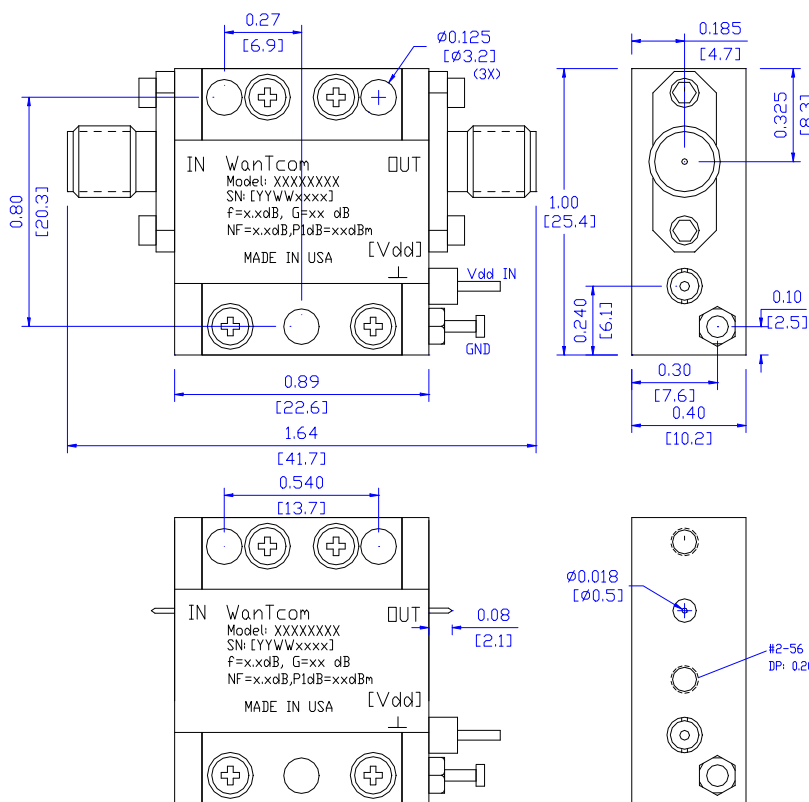
Specifications and information are subject to change without notice.

**WBPA2060A****2.0- 6.0 GHz LOW NOISE MEDIUM POWER AMPLIFIER****REV C**
January 2017**Typical Data:****Outline, WP-11 Housing**

UNITS: INCH
[mm]

Tolerance:
X.XX +/- 0.01";
X.XXX +/- 0.005";

BODY: Brass
Finish: Gold Plating
RF Connector: SMA F Gold Field
Replaceable
V_{dd} PWR: Feed through



Specifications and information are subject to change without notice.

WanTcom, Inc * Phone 01 952 448 6088 * FAX: 01 952 448 7188 * e-mail: sales@wantcominc.com * Web site: www.wantcominc.com



Application Notes:

A. SMA Torque Wrench Selection

Always use a torque wrench with 5 ~ 6 inch-lb coupling torque setting for mating the SMA cables to the amplifier. Never use torque more than 8 inch-lb wrench for tightening the mating cable to the connector. Otherwise, the permanent damage will occur to the SMA connectors of the amplifier. 8710-1582 (5 inch-lb) is one of the ideal torque wrench choice from Agilent Technology.

B. DC Power Line Connection

Strip the insulation layer at the end of DC power supply wire. The stripped distance should be in the range of 0.100" to 0.200". The 24 ~ 26 American Wire Gauge wire is suitable. Wound the stripped terminal wire about 1 to 2 turns on the DC feed thru center pin. Solder the wounded wire and the center pin together. Clean the soldering area by Q-tip with alcohol to remove the flux and residue.

Repeat the process to solder the DC return wire on the ground turret.

C. Mounting the Amplifier

Use three pieces of #4-40 with longer than 9/16" screws for mounting the amplifier on a metal-based chase. Flat and spring washers are needed to prevent the screw loosening during the shock and vibration. Always use the appropriate torque setting of the power screwdriver to mount them.
